

Lokaöschau Z368 Kaninchen 2019

Allgemeine Schau

große Rassen

Deutsche Riesen weiß



Geier, Alfred

0a	1.0	Z 368		n. B.
0b	1.0	Z 368		k. E.

Deutsche Widder wildfarben



Fieß, Martin

1	1.0	Z 368	283	95,5	sgI
2	1.0	Z 368	284	96,0	sgE
3	1.0	Z 368	282	96,0	sgE
4	1.0	Z 368	281	0,0	nb
5	1.0	Z 368	388	96,0	sgE
6	0.1	Z 368	285	96,0	sgE

mittelgroße Rassen

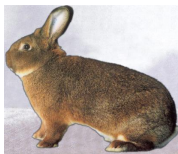
Weißer Wiener



Fischer, Heiko

7	1.0	Z 368	283	96,0	sgE
8	1.0	Z 368	2814	97,0	vLVE
9	1.0	Z 368	4820	96,5	hvE
10	1.0	Z 368	286	96,5	hvE
11	1.0	Z 368	287	96,5	hvE
12	0.1	Z 368	289	96,0	sgE
13	0.1	Z 368	2817	96,0	sgE
14	0.1	Z 368	2811	96,5	hvE

Grauer Wiener dunkelgrau



Reinhard, Harald

15	1.0			94,0	sgII
16	0.1			95,5	sgI
17	0.1			95,5	sgI

Hasenkaninchen rotbraun



Bauch, Eduard

18	1.0	Z 368	4812	95,5	sgI
19	1.0	Z 368	1811	94,5	sgII
20	1.0	Z 368	183	96,0	sgE
21	1.0	Z 368	1813	97,0	vLVE
22	1.0	Z 368	181	96,5	hvE
23	0.1	Z 368	5818	95,5	sgI

Sallander

Reinhard, Harald

24	1.0			96,5	hvE
25	1.0			96,5	hvE
26	0.1			97,0	vE
27	0.1			95,5	sgI

kleine Rassen

Deutsche Kleinwider wildfarben



Fieß, Martin

28	1.0	Z 368	389	96,0	sgE
29	1.0	Z 368	387	95,5	sgI
30	1.0	Z 368	4813	95,5	sgI
31	1.0	Z 368	4815	95,0	sgI
32	0.1	Z 368	3811	96,5	hvE
33	0.1	Z 368	3812	96,0	sgE
34	0.1	Z 368	4818	95,5	sgI

Sachsengold



Streicher, Helmut

35	1.0	B664	5849	95,0	sgI
36	1.0	Z286	4713	97,0	vSTD

Kleinsilber blau



Mössner, Karl-Heinz

37	0.1	Z 368	387	96,5	hvE
38	0.1	Z 368	5811	96,5	hvE
39	0.1	Z 368	385	96,5	hvE
40	0.1	Z 368	589	96,5	hvE

Zwergassen

Zwergwider dunkelgrau



Bauer, Erich

41	1.0	Z 206	5812	96,5	hvE	20,00 €
42	1.0	Z 206	386	96,0	sgE	30,00 €
43	1.0	Z 206	385	96,5	hvE	
44	1.0	Z 206	282	97,0	vLVE	
45	0.1	Z 206	283	leer		

Zwergschecken schwarz-weiß



Haußler, Günter

46	1.0	Z 368	285	95,5	sgI
47	1.0	Z 368	284	95,0	sgI

Kat.-Nr.:	Geschl./Tato:	Bewertung:	Vkpr.:	Kat.-Nr.:	Geschl./Tato:	Bewertung:	Vkpr.:
-----------	---------------	------------	--------	-----------	---------------	------------	--------

48	1.0 Z 368	5816	96,5 hvE
49	1.0 Z 368	282	96,5 hvE

Zwergschecken thüringerfarbig-weiß

Haußler, Günter

50	1.0 Z 368	386	94,0 sgII
51	1.0 Z 368	182	96,5 hvE
52	1.0 Z 368	387	96,5 hvE
53	1.0 Z 368	181	97,0 vGed.
54	0.1 Z 368	5819	95,5 sgI
55	0.1 Z 368	5828	96,0 sgE
56	0.1 Z 368	5810	96,0 sgE
57	0.1 Z 368	185	leer

Hermelin RA (=Rotaugen)



Hesser Finn

58	1.0 ZJ 368	482	94,0 sgJpok
----	------------	-----	-------------

Hesser Felix

59	1.0 ZJ 368	181	94,5 sgII
----	------------	-----	-----------

Streicher, Helmut

60	1.0 Z328	5812	96,0 sgE
----	----------	------	----------

Hesser Felix

61	0.1 Z 368	373	95,5 sgJpok
----	-----------	-----	-------------

Hesser Timm

62	0.1 ZJ 368	483	96,0 sgJpok
----	------------	-----	-------------

Hermelin BIA (=Blauaugen)

Carle, Thomas

63	1.0 Z 368	2810	95,5 sgI
----	-----------	------	----------

Bauch, Devin

64	1.0 ZJ 368	4822	96,0 sgJpok
----	------------	------	-------------

Carle, Thomas

65	1.0 Z 368	287	97,0 vE
----	-----------	-----	---------

Bauch, Devin

66	1.0 ZJ 368	1818	95,5 sgI
----	------------	------	----------

Carle, Thomas

67	1.0 Z 368	283	96,5 hvE
----	-----------	-----	----------

Bauch, Vanessa

68	1.0 Z 368	5812	97,0 vJpok
----	-----------	------	------------

Carle, Thomas

69	1.0 Z 368	281	97,5 vLVE
----	-----------	-----	-----------

70	0.1 Z 368	5837	97,0 vE
----	-----------	------	---------

Bauch, Devin

71	0.1 ZJ 368	1821	96,0 sgE
----	------------	------	----------

Carle, Thomas

72	0.1 Z 368	5840	97,5 vGed.
----	-----------	------	------------

Bauch, Devin

73	0.1 ZJ 368	1817	94,0 sgII
----	------------	------	-----------

Carle, Thomas

74	0.1 Z 368	286	95,5 sgI
----	-----------	-----	----------

Bauch, Vanessa

75	0.1 Z 368	5813	96,5 hvE
----	-----------	------	----------

Carle, Thomas

76	0.1 Z 368		leer
----	-----------	--	------

77	0.1 Z 368	284	97,0 vSTD
----	-----------	-----	-----------

Farbenzwerge blau



Haußler, Günter

78	1.0 Z 368	281	96,5 hvE
----	-----------	-----	----------

79	1.0 Z 368	283	leer
----	-----------	-----	------

Langhaarrassen

Löwenköpfchen japanerfarbig

Bauch, Vanessa

80	1.0 NZ 285	283	94,5 sgII
----	------------	-----	-----------